



EZ Series Security Grilles

STYLE, PRACTICALITY AND SECURITY: YOU CAN HAVE IT ALL



DYNAMIC
CLOSURES

INNOVATIVE DESIGN. INTELLIGENTLY SIMPLE.

BENEFITS OF THE EZ

Seamless Look Works With Your Design

- Variety of grille patterns, materials, and finishes.
- Get taller, wider, and/or curved doors.
- Some models allow great airflow - makes HVAC balancing easier.

Saves Time, Reduces Costs and Eliminates Risks

- No need to build a pocket - includes its own pocket door.
- Saves on installation time - arrives on site 90% assembled
- Curtain is already loaded into the pocket in the correct order.
- Easy integration - 6-inch wide pocket fits flush with commercial wall studs.

Complies With Local Fire Codes

- Emergency egress “door within a door”

ADA Compliant Options

- Locks and hardware that can be operated by wheelchair users.

Saves On Design Time

- Our customer support team can guide you through the options.
- Get easy CAD elements to finish your design faster.

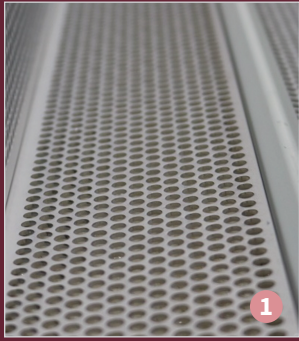
Easy for End Users

- The EZ is designed to open and close smoothly, year after year.
- Locks are easy to use.
- Easy for security to update.

Learn More at [DynamicClosures.com](https://www.DynamicClosures.com)



FEATURES & OPTIONS



1



2



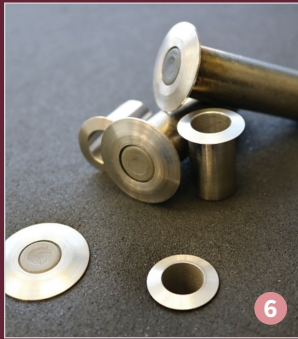
3



4



5



6



7



8



9



Standard Finish

10



Clear
Anodized



Black
Anodized

Optional Finish



Bronze
Anodized



Light
Bronze
Anodized



Champagne
Anodized

1. Patented 1-Piece Continuous Hinge

- Eliminates the unsightly “black soot” hinge stains
- See individual models for availability.

2. 6" Wide Pre-Assembled Pocket

- Saves time and effort during installation.
- Easier to assemble.
- Fits easily between commercial studs.

3. Custom Curves With Industry-Leading Turnaround

- Choose from standard curves or create your own.
- We bend curves in-house to deliver your doors faster and maximum quality.

4. User-Friendly Locking Posts

- Accommodates right hand and left hand grips.
- Easy for people of different heights.
- Flush-mounted hardware for sleek look and elimination of snag points.
- Unique shape gives unbelievable strength and also makes posts easy to service.

5. Emergency Egress Door

- “Door within a door” is available to meet fire code regulations.

6. Dust Proof Floor Sockets

- Spring-loaded protective cap keeps dust out of floor sockets.
- Sockets for food counters meet the strictest health code regulations.

7. Easy to Change Locks

- 1" mortise cylinder locks can be easily changed by your security team.
- Optional SFIC housing and cores available.

8. New 2017 - Optional Maglock

- Can use card readers and keypads.
- See individual post types for availability.

9. Materials Options

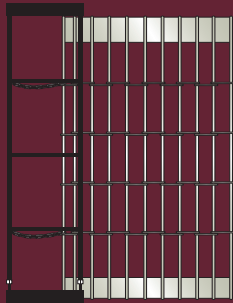
- Aluminum rod and link, perforated aluminum, polycarbonate panels, or solid aluminum.

10. Colour Options

- In stock: clear anodized or black anodized.
- Bronze, Light bronze, or champagne anodized also available with notice.

Learn More at DynamicClosures.com

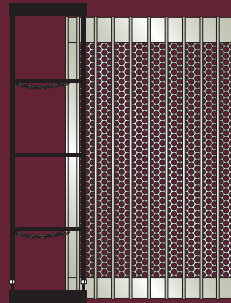
EZ SERIES MODELS (CSI Division: 08 35 16)



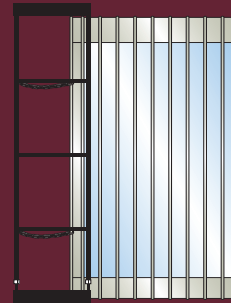
EZ Grille



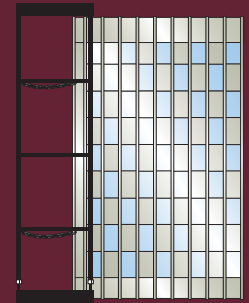
EZ Opaque



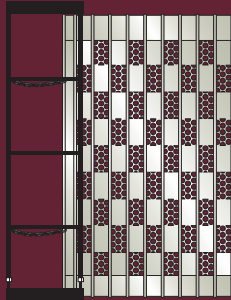
EZ Paravent



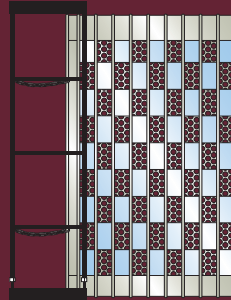
EZ Prestige



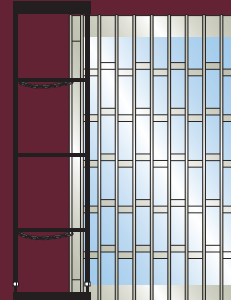
EZ AG CS



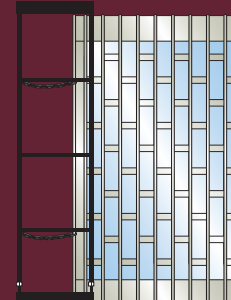
EZ AG PS



EZ AG PC



EZ 12 CS



EZ 525 CS

Material	EZ Grille	EZ Opaque	EZ Paravent	EZ Prestige	EZ AG CS	EZ AG PS	EZ AG PC	EZ 12 CS	EZ 525 CS
4" wide aluminum rod and link	•								
4" wide solid aluminum panels		•							
Perforated aluminum interlocked in 4" wide interlocking panels			•						
Polycarbonate panels interlocked in 4" wide aluminum frame				•					
4" wide panel with interlocked alternating polycarbonate panels and solid aluminum panels in a checkerboard design					•				
4" wide panel with interlocked alternating perforated aluminum panels and solid aluminum panels in a checkerboard design						•			
4" wide panel with interlocked alternating polycarbonate panels and perforated aluminum panels in a checkerboard design							•		
4" wide panel with interlocked 12" polycarbonate panels and 2" solid aluminum panels in a brick design								•	•
6", 9" 12", 18" patterns available					•	•	•		
Hinge									
2" top and bottom truss-like aluminum panels	•								
1 piece continuous aluminum		•	•	•	•	•	•	•	•
Weight/Load									
5.00 lbs per ft ² (stacked) and 1.00 lbs per ft ² (extended)	•								
10.00 lbs per ft ² (stacked) and 1.60 lbs per ft ² (extended)				•					
11.50 lbs per ft ² (stacked) and 1.80 lbs per ft ² (extended)			•					•	•
13.50 lbs per ft ² (stacked) and 2.00 lbs per ft ² (extended)					•	•	•		
15.00 lbs per ft ² (stacked) and 2.20 lbs per ft ² (extended)		•							
Pocket and aluminum pocket door included	•	•	•	•	•	•	•	•	•
Pocket Width Opening - 6" minimum	•	•	•	•	•	•	•	•	•
Max Height - 14'0", and higher with review	•	•	•	•	•	•	•	•	•
Max Width - Unlimited	•	•	•	•	•	•	•	•	•